

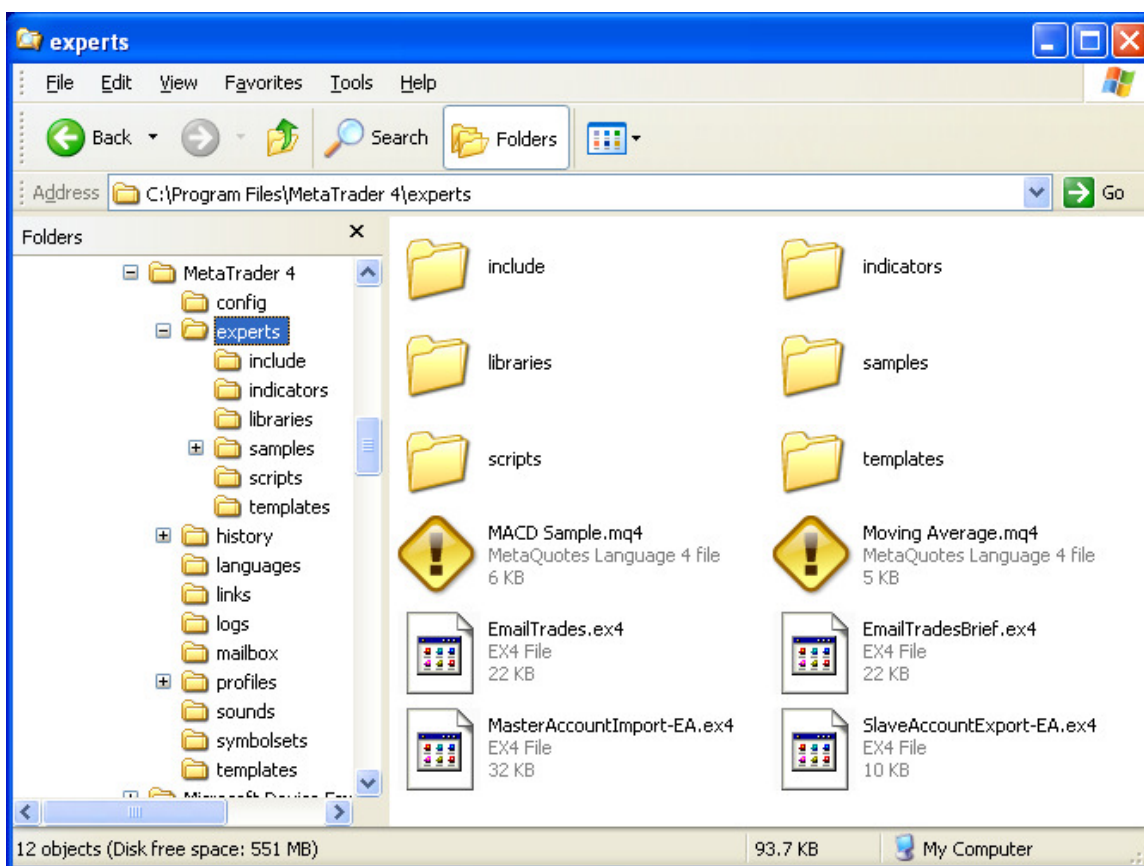
## TradeCopy Help Guide

**TradeCopy** is a software system of combination of 2 mql4 scripts/EAs (*AccountImport-EA.ex4* and *AccountExport-EA.ex4*) and a special DLL for signals transmission (*GlobalVariable.dll*), which can duplicate all trading operations from one or even several Metatrader 4 terminals to another. The system is very flexible to use - you may copy lot sizes from slaves or adjust them, you may set *AccountImport* to calculate lot sizes with money management function in import account, you may set *AccountExport* to reverse the trades (i.e. buy instead of sell; useful when copying trades from some badly losing account).

Export EA will work even on accounts accessible only by read-only (investor) passwords. **TradeCopy** is licensed only for personal usage and master EA is locked to make trades only on accounts opened for your name. Only import EA (that is used to make trades) is locked to your accounts, export EA can be used to copy trades from any account, even if it accessed by read-only (investor) password.

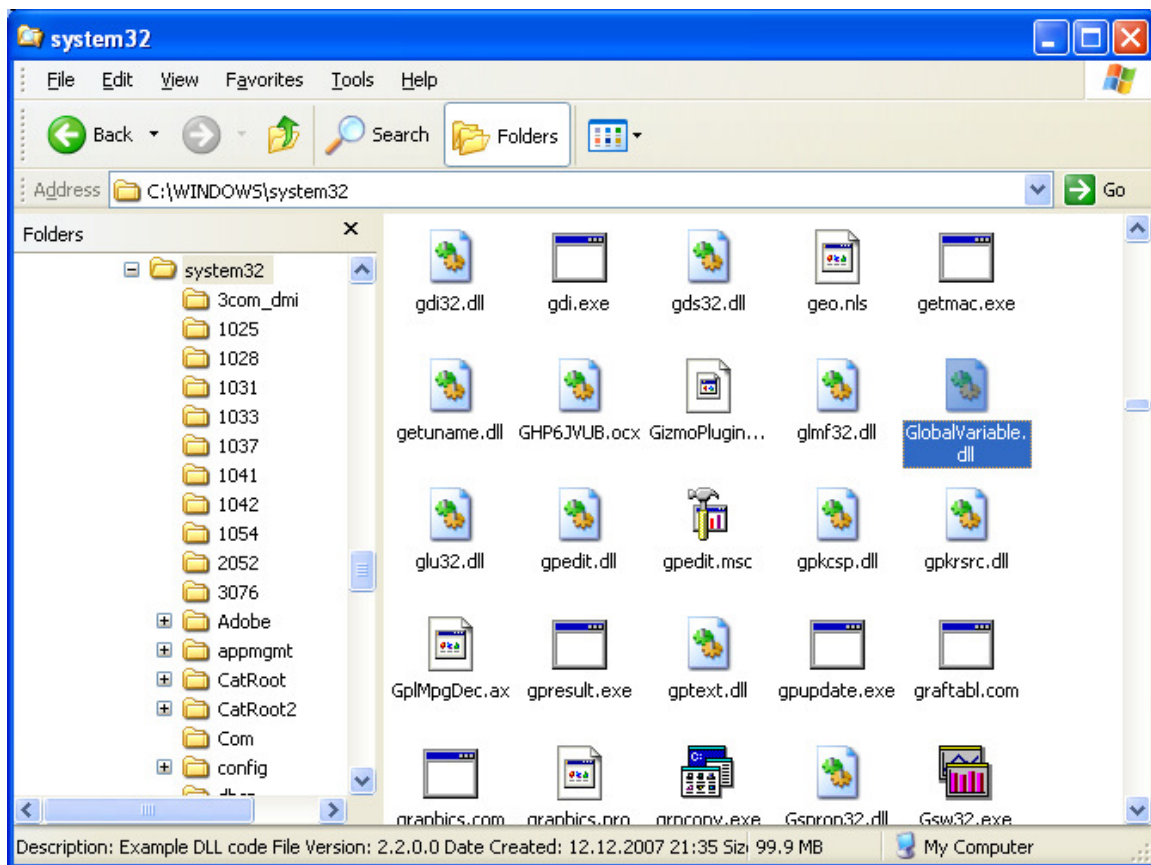
### Installation:

1. copy *AccountImport-EA.ex4* to "experts" subfolder of your own trading account Metatrader 4 installation folder:



You may run several instances of *AccountImport-EA.ex4* on your computer on different accounts. To achieve that you must install several copies of Metatrader 4 for each account and copy *AccountImport-EA.ex4* to each of them.

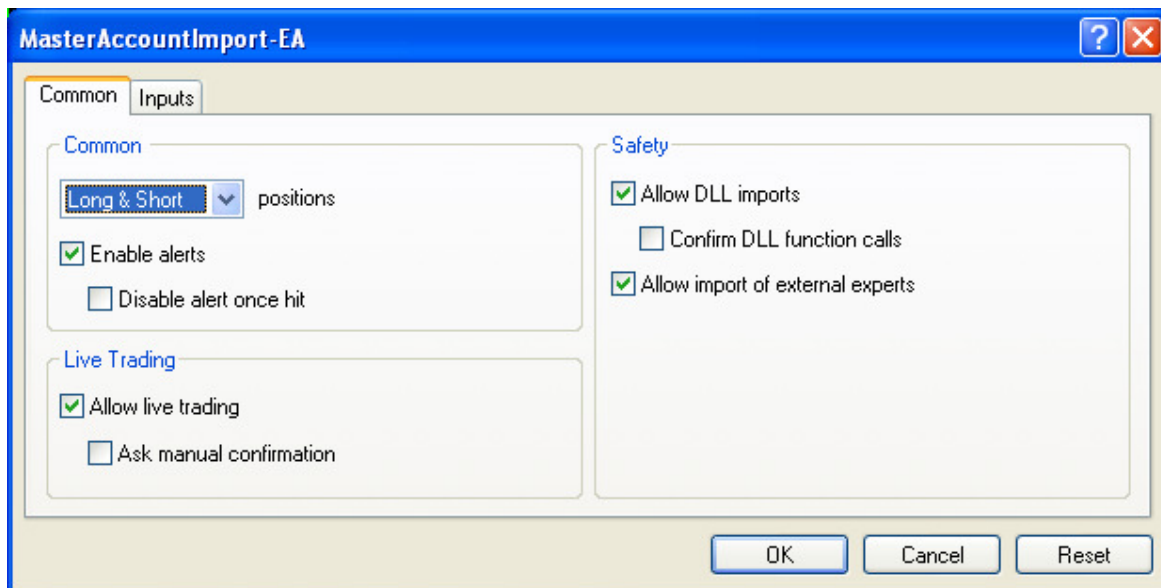
2. Copy *AccountExport-EA.ex4* to "experts" subfolder of Metatrader 4 installation folder of account from where you want to copy trades. You may run several instances of *AccountExport-EA.ex4* on your computer on different accounts. To achieve that you must install several copies of Metatrader 4 for each account and copy *AccountExport-EA.ex4* to each of them.
3. Copy *GlobalVariable.dll* to "system32" subfolder of your Windows XP installation (or "system" on Vista):



This DLL is used to exchange the information between EAs.

These EAs work in eternal loop for precise timing and due to this you can't press F7 to change the parameters. You must remove EA from chart and then start over with new parameters.

You must enable DLLs in EAs (EA properties window - Allow DLL imports and disable Confirm DLL function calls). Also enable "Allow import of external experts" checkbox.



For export/import EAs you must set different "system" names for all AccountExport and put all those names in "SlaveNames" parameter of AccountImport (separated by comma). All "system" names must be unique between all running EAs on your computer (these names are used to transfer variables via GlobalVariable.dll).

Parameters explanations:

**AccountImport:**

SlaveNames	system names of slaves, that are copied
MyMagic	Magic number for orders
HourShiftGMT	adjust MT4 server time shift to GMT time. E.g. server=11:34, GMT=13:34, then HourShiftGMT=2
PairPrefix	e.g. if pair name is myEURUSD, then PairPrefix="my"
PairSuffix	e.g. if pair name is EURUSDfx, then PairSuffix ="fx"
Lots	own lot size
LotDigits	lot size decimal digits
MinLots	minimum lot size
MaxLots	maximum lot size
ExportLots	True - get lot size from slave, False – use own lot size
ExportLotMultiply	multiply slave lot by this value
MaximumRisk	% MM lot size if FixedLot=false
FixedLot	false - calculate own lot size with MaximumRisk MM. partial closing will not work correctly in this case.
Slippage	slippage for orders
MaxMarketDiff	maximum allowed difference of copied trade open price and market price (useful to not open old trades or on fast market)
Wait4ValidMarketDiff	false - if marketdiff s not valid then trade is skipped, true - trade can be opened later (before ExpireMinutes time)
ExpireMinutes	do not send old orders. 0 - disabled
NumberTries	number of tries to open and close trade
StopLimitOrders	copy stop and limit orders or not
PendingSLTP	true - send market order without sl/tp and modify it later
Wait4TPSL	true - do not close own trades, if master trade is closed by SL or TP
Wait4TPSLMktClose	true - do not close own trades, if master trade is closed by market (wait for TP or SL)
SL_InPoints	true - set SL in points equal to slave SL, false - set SL as price levels of slave order
TP_InPoints	true - set TP in points equal to slave TP, false - set TP as price levels of slave order
TP_adjust	increase TP by these number of pips (when TP_InPoints=true)
SL_adjust	increase SL by these number of pips (when SL_InPoints=true)
Own_TPSL	true - set own SL and TP
OwnTP	own TakeProfit pip value
OwnSL	own StopLoss pip value
TradeBuySide	allow copying buy side orders
TradeSellSide	allow copying sell side orders
MaxOrders	-1 - process all orders, 0 - close all orders, 1,2..4 - have this number of orders
FIFOmode	True - copy with FIFO rule, maintaining the total position only, no stoploss or takeprofit and no other functions
CycleMilliseconds	working cycle time length
closeAllNow	set to 'true' to have expert close all orders immediately

**SlaveExport:**

system	system names of slaves, that are copied
HourShiftGMT	adjust MT4 server time shift to GMT time. E.g. server=11:34, GMT=13:34, then HourShiftGMT=2
PairPrefix	e.g. if pair name is myEURUSD, then PairPrefix="my"
PairSuffix	e.g. if pair name is EURUSDfx, then PairSuffix = "fx"
ReverseTrades	True - switch buy/sell sides
OffsetReverseBySpread	True - add "spread" for entry price for reversed trades
OffsetPips	Offset spread pips
EquityFilter	true - copy trades only when equity is above SMA (or reverse trades)
EquitySMA	period of SMA of equity
ReverseOnNegativeEquity	true - reverse trades, if equity is below SMA
History	transfer this number of last closed trades from history.
CycleMilliseconds	working cycle time length

Import EA can trade with own lot size (Lots) when ExportLots=false, it can copy lot size from export EA when ExportLots=true and ExportLotMultiply=1.0 and it can multiply that size by ExportLotMultiply:

e.g. when ExportLots=true and ExportLotMultiply=2, export lot is 0.2, then import lot=0.2\*2=0.4  
 or ExportLotMultiply=0.5, export lot is 0.2, then import lot = 0.2\*0.5 = 0.1

Test TradeCopy on demo accounts first to get fully comfortable with the way it works.